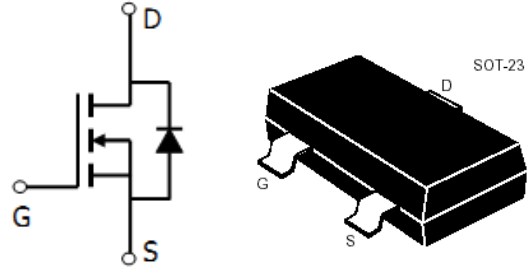




SOT-23 場效應晶體管(SOT-23 Field Effect Transistors)



N-Channel Enhancement-Mode MOS FETs

N 沟道增强型 MOS 场效应管

■MAXIMUM RATINGS 最大額定值

Characteristic 特性參數	Symbol 符號	Max 最大值	Unit 單位
Drain-Source Voltage 漏極-源極電壓	BV_{DSS}	55	V
Gate- Source Voltage 柵極-源極電壓	V_{GS}	± 12	V
Drain Current (continuous) 漏極電流-連續	I_D	2.1	A
Drain Current (pulsed) 漏極電流-脉冲	I_{DM}	10	A
Total Device Dissipation 總耗散功率 $T_A=25^{\circ}C$ 環境溫度為 $25^{\circ}C$	P_D	1250	mW
Junction 結溫	T_J	150	$^{\circ}C$
Storage Temperature 儲存溫度	T_{stg}	-55to+150	$^{\circ}C$

■DEVICE MARKING 打標

GM3422=AR



■ELECTRICAL CHARACTERISTICS 電特性

($T_A=25^{\circ}\text{C}$ unless otherwise noted 如無特殊說明，溫度為 25°C)

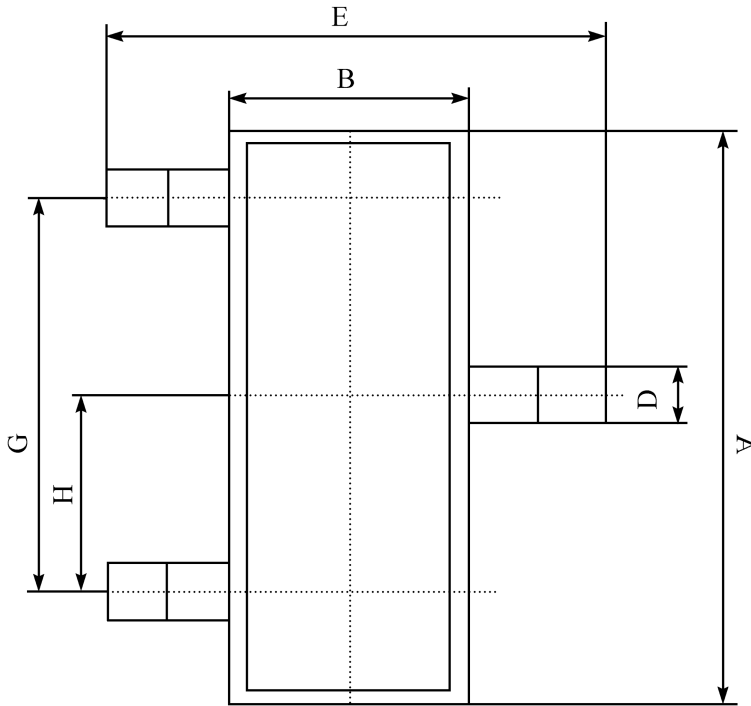
Characteristic 特性參數	Symbol 符號	Min 最小值	Typ 典型值	Max 最大值	Unit 單位
Drain-Source Breakdown Voltage 漏極-源極擊穿電壓($I_D = 10\text{mA}, V_{GS}=0\text{V}$)	BV_{DSS}	55	—	—	V
Gate Threshold Voltage 柵極開啓電壓($I_D = 250\mu\text{A}, V_{GS} = V_{DS}$)	$V_{GS(th)}$	0.6	—	2	V
Diode Forward Voltage Drop 內附二極管正向壓降($I_S=1\text{A}, V_{GS}=0\text{V}$)	V_{SD}	—	—	1	V
Zero Gate Voltage Drain Current 零柵壓漏極電流($V_{GS}=0\text{V}, V_{DS}= 44\text{V}$) ($V_{GS}=0\text{V}, V_{DS}= 44\text{V}, T_A=55^{\circ}\text{C}$)	I_{DSS}	—	—	1 5	μA
Gate Body Leakage 柵極漏電流($V_{GS}=\pm 12\text{V}, V_{DS}=0\text{V}$)	I_{GSS}	—	—	± 100	nA
Static Drain-Source On-State Resistance 靜態漏源導通電阻($I_D= 2.1\text{A}, V_{GS}= 4.5\text{V}$)	$R_{DS(ON)}$	—	125	160	$\text{m}\Omega$
Static Drain-Source On-State Resistance 靜態漏源導通電阻($I_D= 1.5\text{A}, V_{GS}= 2.5\text{V}$)	$R_{DS(ON)}$	—	160	200	$\text{m}\Omega$
Input Capacitance 輸入電容 ($V_{GS}=0\text{V}, V_{DS}= 25\text{V}, f=1\text{MHz}$)	C_{ISS}	—	214	—	pF
Output Capacitance 輸出電容 ($V_{GS}=0\text{V}, V_{DS}= 25\text{V}, f=1\text{MHz}$)	C_{OSS}	—	31	—	pF
Turn-ON Time 開啓時間 ($V_{DS}= 30\text{V}, V_{GS}=10\text{V}, R_{GEN}=3\Omega$)	$t_{(on)}$	—	2	—	ns
Turn-OFF Time 關斷時間 ($V_{DS}= 30\text{V}, V_{GS}=10\text{V}, R_{GEN}=3\Omega$)	$t_{(off)}$	—	16	—	ns

Pulse Width $\leq 300\mu\text{s}$; Duty Cycle $\leq 2.0\%$



■DIMENSION 外形封装尺寸

單位(UNIT): mm



序號	數值及公差
A	2.90 ± 0.10
B	1.30 ± 0.10
C	1.00 ± 0.10
D	0.40 ± 0.10
E	2.40 ± 0.20
G	1.90 ± 0.10
H	0.95 ± 0.05
J	0.13 ± 0.05
K	$0.00-0.10$
M	≥ 0.2
N	0.60 ± 0.10
P	$7 \pm 2^\circ$

