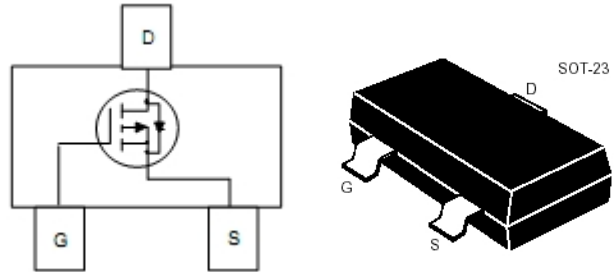




GM2623

SOT-23 場效應晶體管(SOT-23 Field Effect Transistors)



P-Channel Enhancement-Mode MOS FETs

P 沟道增强型 MOS 场效应管

■MAXIMUM RATINGS 最大額定值

Characteristic 特性參數	Symbol 符號	Max 最大值	Unit 單位
Drain-Source Voltage 漏極-源極電壓	BV_{DSS}	-20	V
Gate- Source Voltage 柵極-源極電壓	V_{GS}	± 10	V
Drain Current (continuous) 漏極電流-連續	I_D	-6	A
Drain Current (pulsed) 漏極電流-脉冲	I_{DM}	-15	A
Total Device Dissipation 總耗散功率 $T_A=25^{\circ}C$ 環境溫度為 $25^{\circ}C$	P_D	1400	mW
Junction 結溫	T_J	150	$^{\circ}C$
Storage Temperature 儲存溫度	T_{stg}	-55to+150	$^{\circ}C$

■DEVICE MARKING 打標

GM2623=2623



GM2623

■ **ELECTRICAL CHARACTERISTICS 電特性**

($T_A=25^{\circ}\text{C}$ unless otherwise noted 如無特殊說明，溫度為 25°C)

Characteristic 特性參數	Symbol 符號	Min 最小值	Typ 典型值	Max 最大值	Unit 單位
Drain-Source Breakdown Voltage 漏極-源極擊穿電壓($I_D = -250\mu\text{A}, V_{GS}=0\text{V}$)	BV_{DSS}	-20	—	—	V
Gate Threshold Voltage 柵極開啓電壓($I_D = -250\mu\text{A}, V_{GS} = V_{DS}$)	$V_{GS(th)}$	-0.6	—	-1.4	V
Diode Forward Voltage Drop 內附二極管正向壓降($I_S = -1\text{A}, V_{GS}=0\text{V}$)	V_{SD}	—	—	-1.5	V
Zero Gate Voltage Drain Current 零柵壓漏極電流($V_{GS}=0\text{V}, V_{DS} = -20\text{V}$)	I_{DSS}	—	—	-1	μA
Gate Body Leakage 柵極漏電流($V_{GS}=\pm 10\text{V}, V_{DS}=0\text{V}$)	I_{GSS}	—	—	± 100	nA
Static Drain-Source On-State Resistance 靜態漏源導通電阻($I_D = -6\text{A}, V_{GS} = -4.5\text{V}$)	$R_{DS(ON)}$	—	—	33	$\text{m}\Omega$
Static Drain-Source On-State Resistance 靜態漏源導通電阻($I_D = -2\text{A}, V_{GS} = -2.5\text{V}$)	$R_{DS(ON)}$	—	—	45	$\text{m}\Omega$
Input Capacitance 輸入電容 ($V_{GS}=0\text{V}, V_{DS} = -10\text{V}, f=1\text{MHz}$)	C_{ISS}	—	600	—	pF
Output Capacitance 輸出電容 ($V_{GS}=0\text{V}, V_{DS} = -10\text{V}, f=1\text{MHz}$)	C_{OSS}	—	120	—	pF
Turn-ON Time 開啓時間 ($V_{DS} = -10\text{V}, I_D = -2.8\text{A}, R_{GEN}=6\Omega$)	$t_{(on)}$	—	8	—	ns
Turn-OFF Time 關斷時間 ($V_{DS} = -10\text{V}, I_D = -2.8\text{A}, R_{GEN}=6\Omega$)	$t_{(off)}$	—	60	—	ns

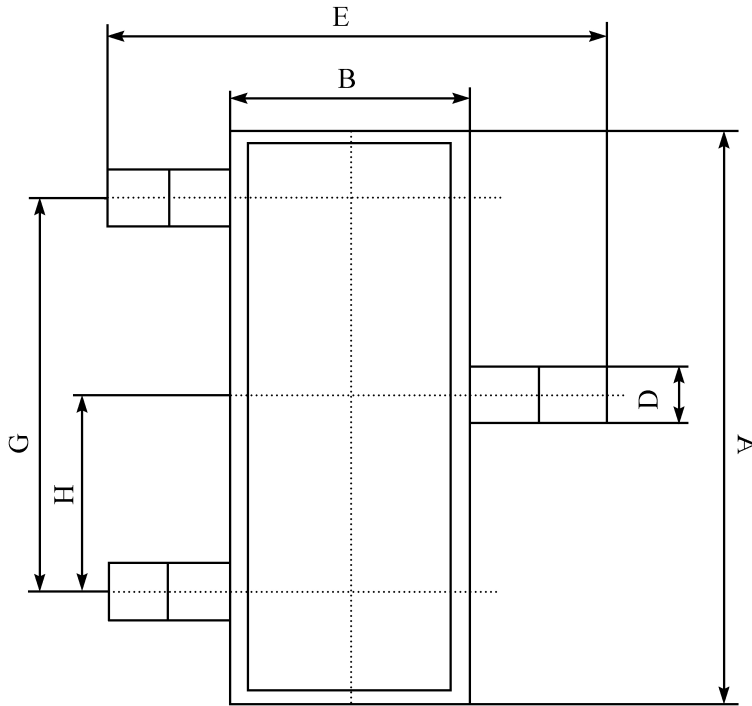
Pulse Width $\leq 300\mu\text{s}$; Duty Cycle $\leq 2.0\%$



GM2623

■DIMENSION 外形封装尺寸

單位(UNIT): mm



序號	數值及公差
A	2.90±0.10
B	1.30±0.10
C	1.00±0.10
D	0.40±0.10
E	2.40±0.20
G	1.90±0.10
H	0.95±0.05
J	0.13±0.05
K	0.00-0.10
M	≥0.2
N	0.60±0.10
P	7±2°

